



Certificate of Analysis

CANNABUSINESS LABORATORIES, LLC

Customer:

Lexwellnessky LLC
4005 Morning Glory LN
Lexington, KY 40509

Received Date **11/15/2024**
COA Released **11/19/2024**

Comments **241115011- Average Weight: 2.499g**

Sample ID **241115011**
Order Number **CB241115005**
Sample Name **Cloud 9 Candy**

External Sample ID

Batch Number **Ky1016242**

Product Type **Edible**
Sample Type **Edible**

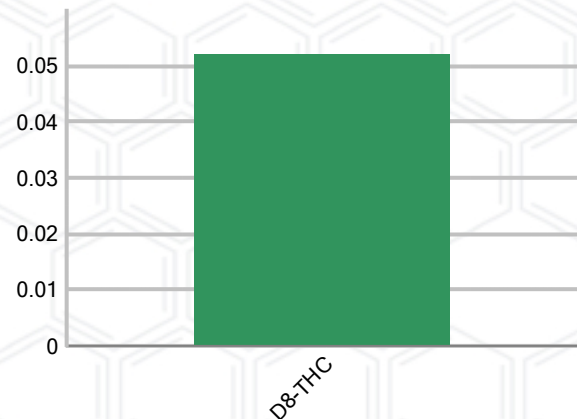
CANNABINOID PROFILE

Analyte	LOQ (%)	% Weight	mg/g
CBC	0.01	ND	ND
CBD	0.01	ND	ND
CBDa	0.01	ND	ND
CBDV	0.01	ND	ND
CBG	0.01	ND	ND
CBGa	0.01	ND	ND
CBN	0.01	ND	ND
d8-THC	0.01	0.052	0.517
d9-THC	0.01	ND	ND
THCa	0.01	ND	ND
Total Cannabinoids		0.052	0.516
Total Potential THC		N/A	N/A
Total Potential CBD		N/A	N/A
Total Potential CBG		N/A	N/A
Ratio of Total Potential CBD to Total Potential THC			N/A
Ratio of Total Potential CBG to Total Potential THC			N/A

SAMPLE IMAGE



CANNABINOIDS % Weight



*Total Cannabinoids refers to the sum of all cannabinoids detected.

*Total Potential CBD = $(0.877 \times \text{CBDa}) + \text{CBD}$. *Total Potential THC = $(0.877 \times \text{THCa}) + \text{THC}$. *Total Potential CBG = $(0.877 \times \text{CBGa}) + \text{CBG}$.

*Total Potential THC/CBD are calculated to take into account the loss of an acid group during decarboxylation.



SIGNATURE

Not Approved

LABORATORY MANAGER

DATE

This product has been tested by CannaBusiness Laboratories using validated testing methodologies and a quality system. Values reported relate only to the product tested. CannaBusiness Laboratories makes no claims as to the efficacy, safety, or other risks associated with any detected or non-detected levels of any compounds reported herein. This Certificate shall not be reproduced except in full, without the written permission of CannaBusiness Laboratories. Photo is of sample received by the lab and may vary from final packaging. The results apply to the sample as received.





Certificate of Analysis

CANNABUSINESS LABORATORIES, LLC

Customer

Lexwellnessky LLC
4005 Morning Glory LN
Lexington, KY 40509



Sample Name: Cloud 9 Candy

Sample ID: 241115011

Order Number: CB241115005

Product Type: Edible

Sample Type: Edible

Received Date: 11/15/2024

Batch Number: Ky1016242

COA released: 11/19/2024 11:25 AM

Potency (mg/g)

Date Tested: 11/18/2024

Method: CB-SOP-028

Instrument:

0.000 %	0.000 %	0.052 %	0.516 mg/g
Total THC	Total CBD	Total Cannabinoids	Total Cannabinoids

Analyte	Result	Units	LOQ	Result	Units
CBC (Cannabichromene)	ND	%	0.010	ND	mg/g
CBD (Cannabidiol)	ND	%	0.010	ND	mg/g
CBDa (Cannabidiolic Acid)	ND	%	0.010	ND	mg/g
CBDV (Cannabidivarin)	ND	%	0.010	ND	mg/g
CBG (Cannabigerol)	ND	%	0.010	ND	mg/g
CBGa (Cannabigerolic Acid)	ND	%	0.010	ND	mg/g
CBN (Cannabinol)	ND	%	0.010	ND	mg/g
D8-THC (D8-Tetrahydrocannabinol)	0.052	%	0.010	0.517	mg/g
D9-THC (D9-Tetrahydrocannabinol)	ND	%	0.010	ND	mg/g
THCa (Tetrahydrocannabinolic Acid)	ND	%	0.010	ND	mg/g

Residual Solvent

Date Tested:

Method: CB-SOP-032

Instrument:

Analyte	Result	Units	LOQ	Result	Analyte	Result	Units	LOQ	Result
1-4 Dioxane	Pending	ppm	29		2-Butanol	Pending	ppm	175	
2-Ethoxyethanol	Pending	ppm	24		2-Methylpentane	Pending	ppm	87	
3-Methylpentane	Pending	ppm	87		2-Propanol	Pending	ppm	350	
Cyclohexane	Pending	ppm	146		Ether	Pending	ppm	350	
Ethylbenzene	Pending	ppm	81		Acetone	Pending	ppm	350	
Isopropyl Acetate	Pending	ppm	175		Methylbutane	Pending	ppm	350	
n-Heptane	Pending	ppm	350		n-Hexane	Pending	ppm	87	
n-Pentane	Pending	ppm	350		Tetrahydrofuran	Pending	ppm	54	
Acetonitrile	Pending	ppm	123		Ethanol	Pending	ppm	350	
Ethyl acetate	Pending	ppm	175		o-Xylene	Pending	ppm	81	
m+p-Xylene	Pending	ppm	163		Methanol	Pending	ppm	250	
Methylene Chloride	Pending	ppm	90		Toluene	Pending	ppm	67	



SIGNATURE

Not Approved

11/19/2024 11:25 AM

DATE

NT = Not tested, ND = Not detected; LOQ = Limit of Quantitation; <LOQ = Detected; >ULOL = Above upper limit of linearity; CFU/g = Colony forming units per 1 gram; TNTC = Too numerous to count

This product has been tested by CannaBusiness Laboratories using validated testing methodologies and a quality system. Values reported relate only to the product tested. CannaBusiness Laboratories makes no claims as to the efficacy, safety, or other risks associated with any detected or non-detected levels of any compounds reported herein. This Certificate shall not be reproduced except in full, without the written permission of CannaBusiness Laboratories. Photo is of sample received by the lab and may vary from final packaging. The results apply to the sample as received.